

Columbia Gorge Labor Market

Scott Bailey, Regional Economist
July, 2016

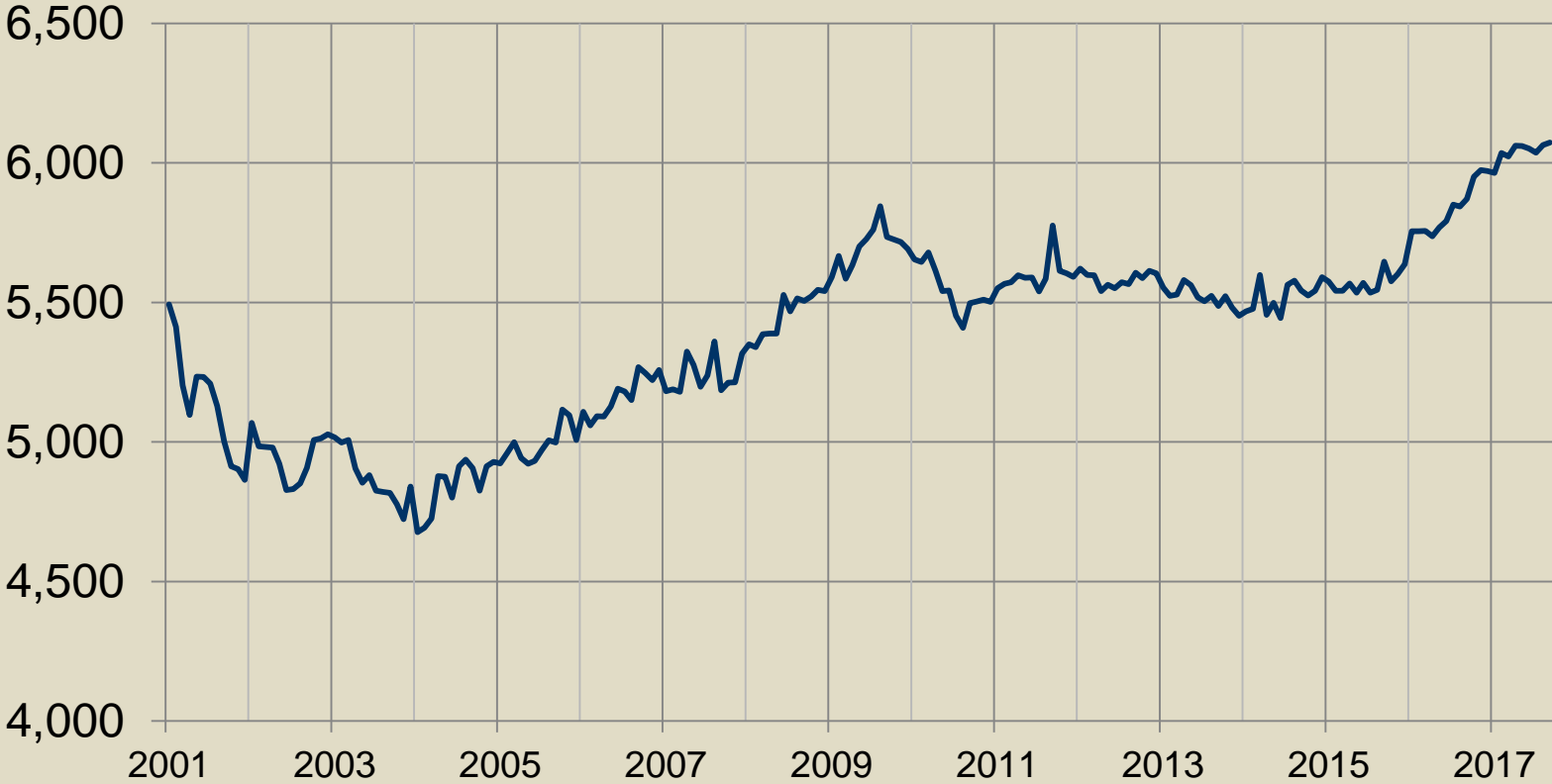
Washington State
Employment Security Department



Labor Market and Economic Analysis

Klickitat: upward momentum in the past year levels off

Seasonally-Adjusted Nonfarm Employment



Source: Washington Employment Security Department



Skamania job losses due to closure of resort

Seasonally-Adjusted Nonfarm Employment



Source: Washington Employment Security Department

Washington State
Employment Security Department

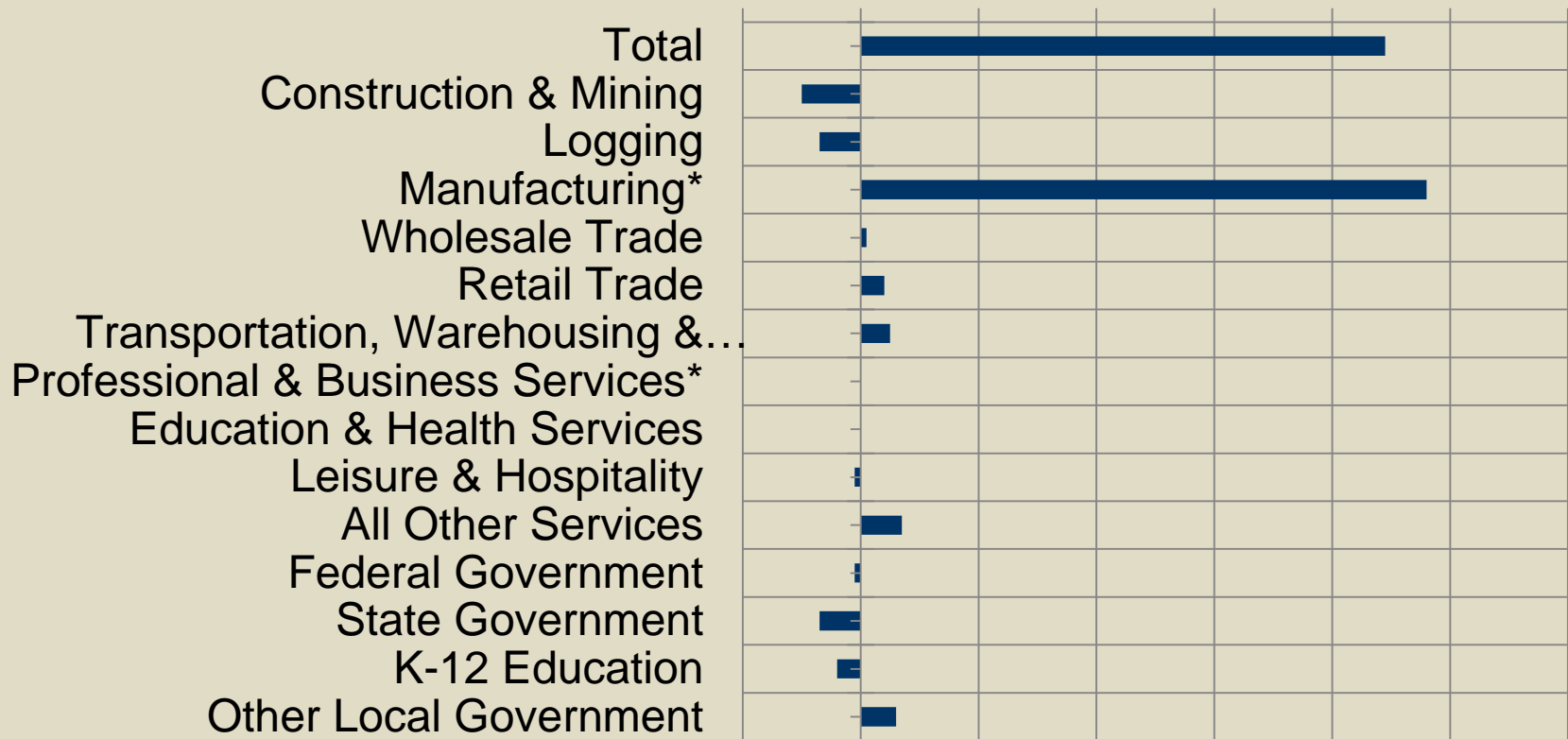
Labor Market and Economic Analysis



In Klickitat, it's all about manufacturing

Employment Change, Klickitat County, 9/07 to 9/17

-200 0 200 400 600 800 1,000 1,200



Source: Washington Employment Security Department

Washington State
Employment Security Department

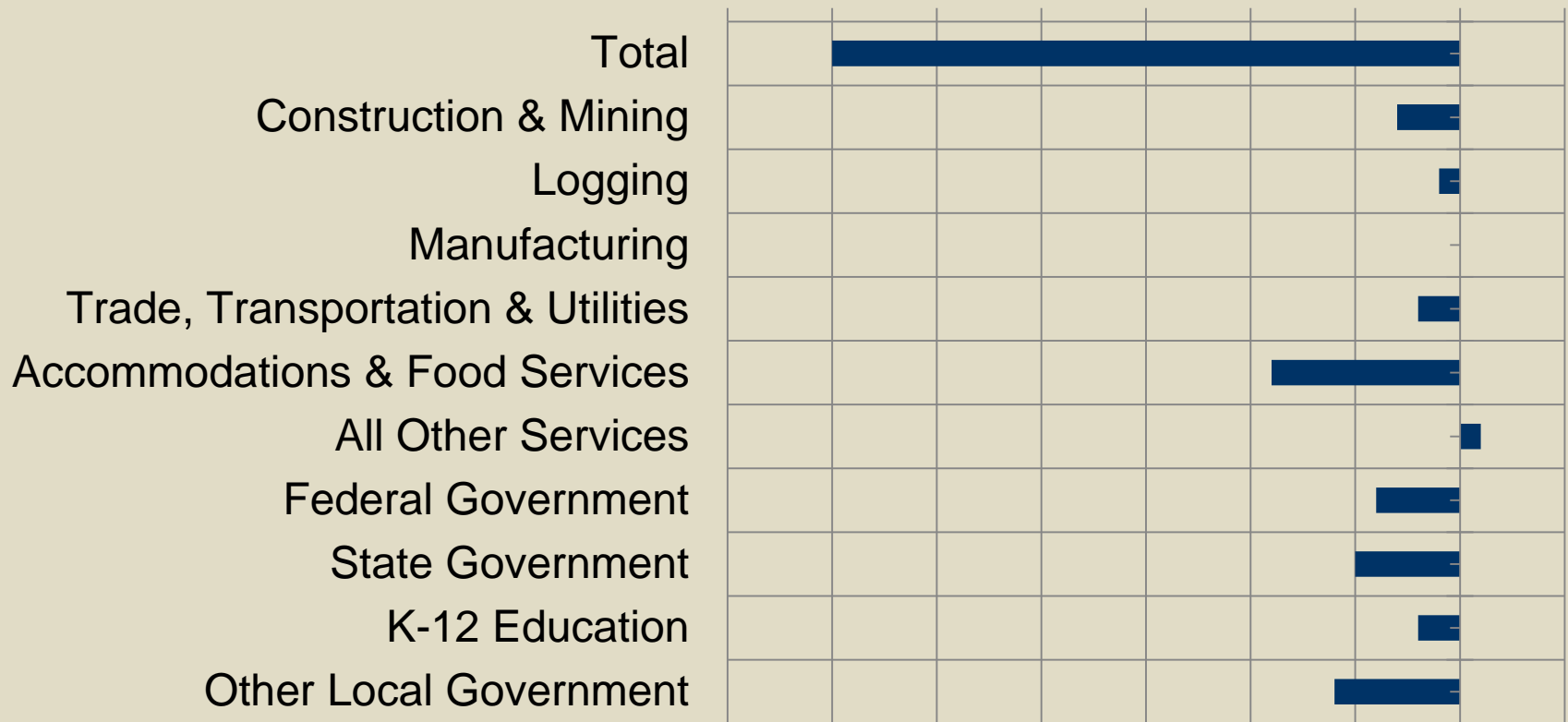


Labor Market and Economic Analysis

Skamania: still well below pre-recession levels

Job Change, Skamania County, 9/07 vs. 9/17

-350 -300 -250 -200 -150 -100 -50 0 50



Source: Washington Employment Security Department

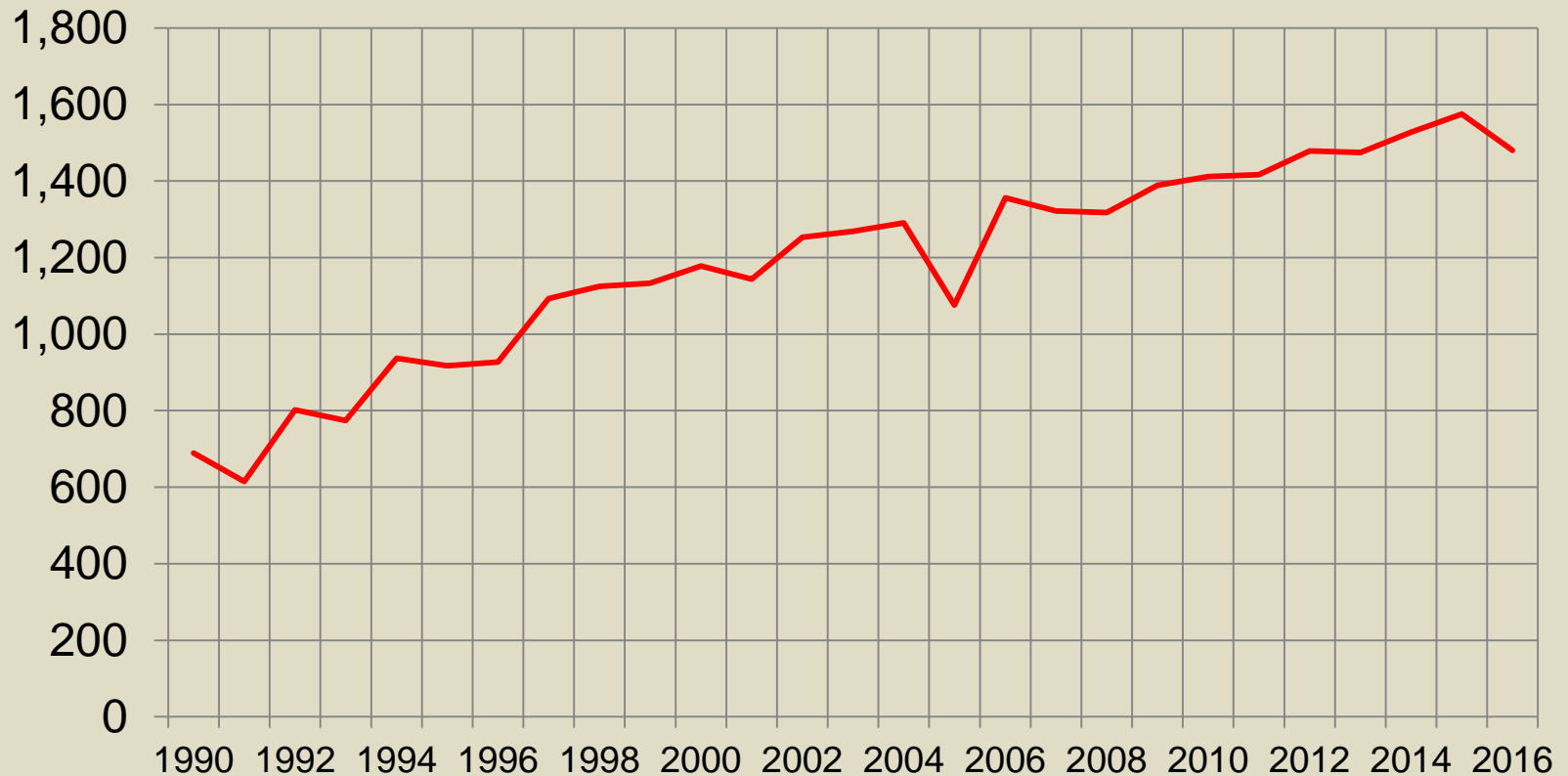
Washington State
Employment Security Department

Labor Market and Economic Analysis



What about agriculture?

Farm Employment in Klickitat County



Source: Washington Employment Security Department

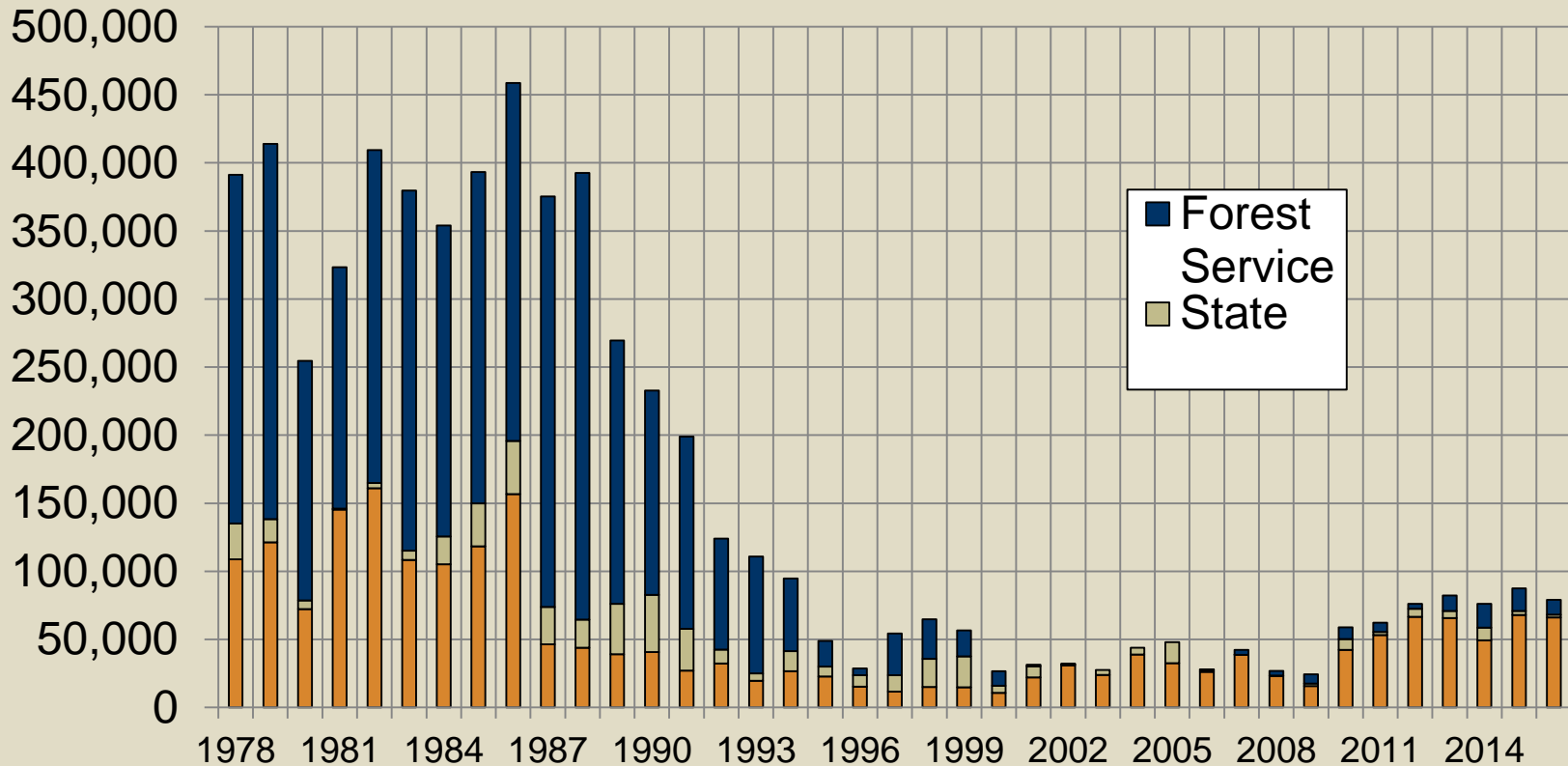
Washington State
Employment Security Department

Labor Market and Economic Analysis



And timber?

Timber harvest in Skamania County (000 Board Feet)



Source: Washington Employment Security Department

Washington State
Employment Security Department

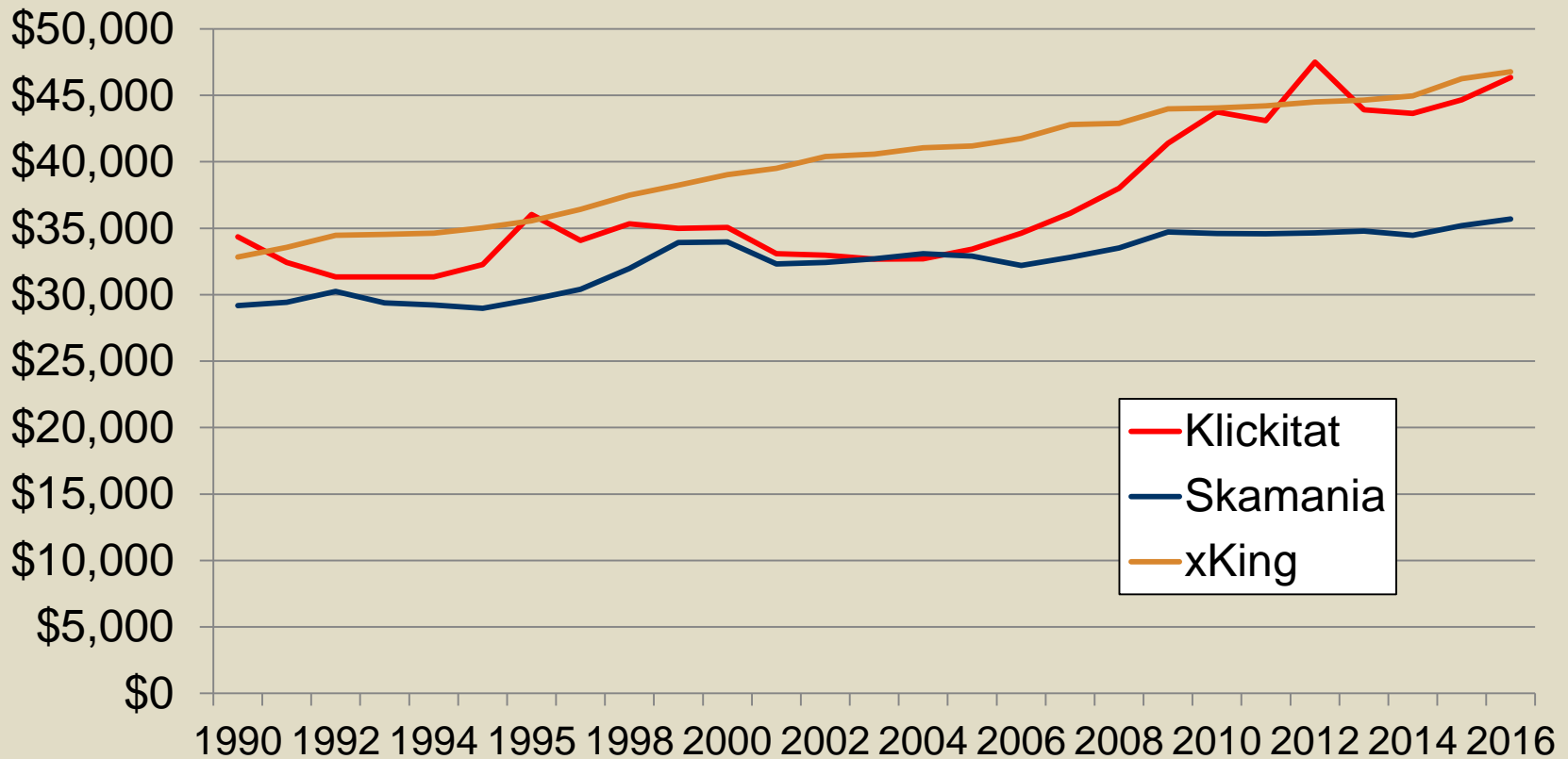
Labor Market and Economic Analysis



A tale of two counties

xKing = Washington excluding King County

Average Annual Wage



Source: Washington Employment Security Department

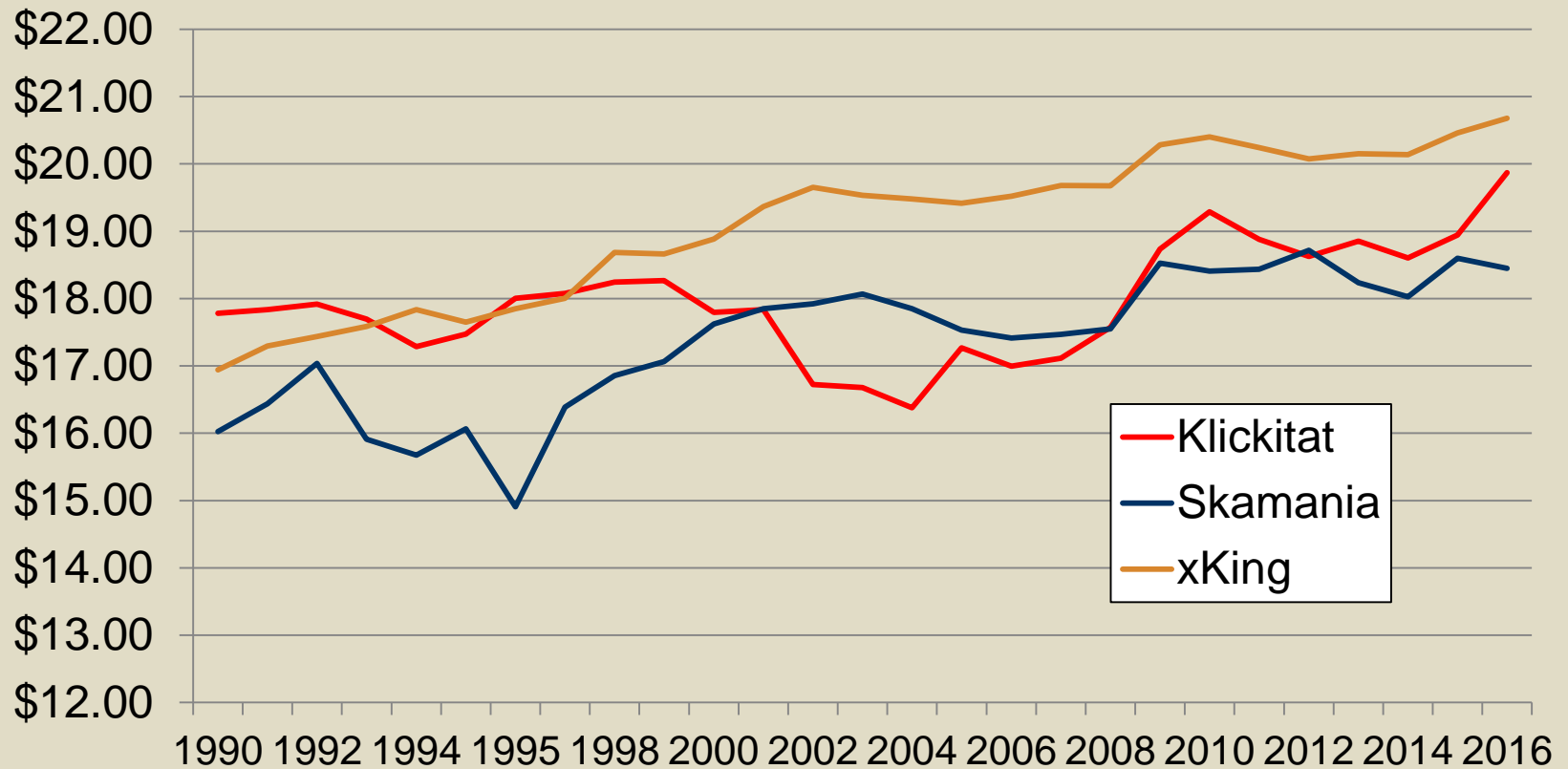
Washington State
Employment Security Department

Labor Market and Economic Analysis



A tale of two counties, continued

Median Hourly Wage



Source: Washington Employment Security Department

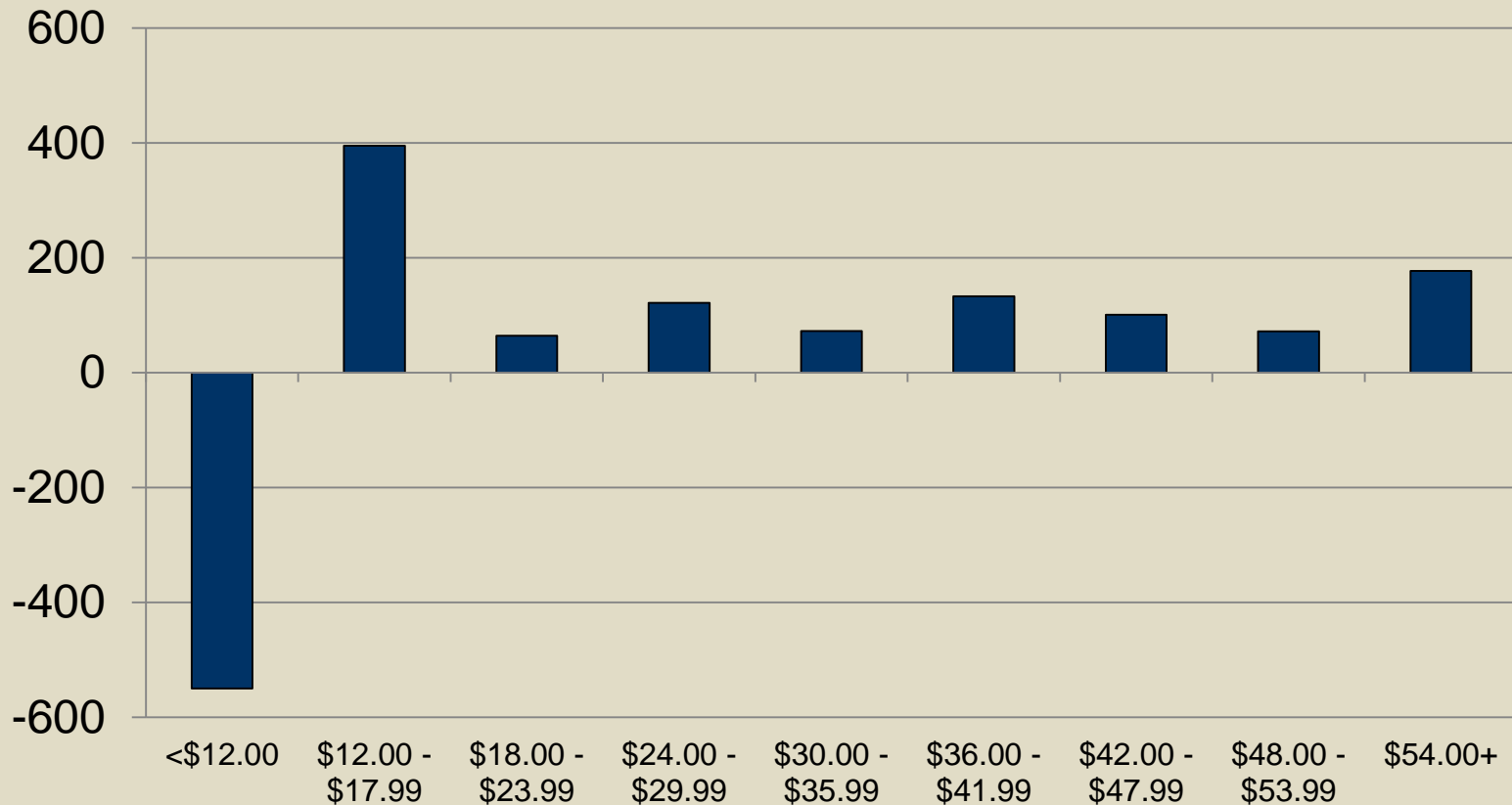
Washington State
Employment Security Department

Labor Market and Economic Analysis



Klickitat: shift towards higher-wage jobs

Change in jobs by hourly wage, 2007- 2016



Source: Washington Employment Security Department

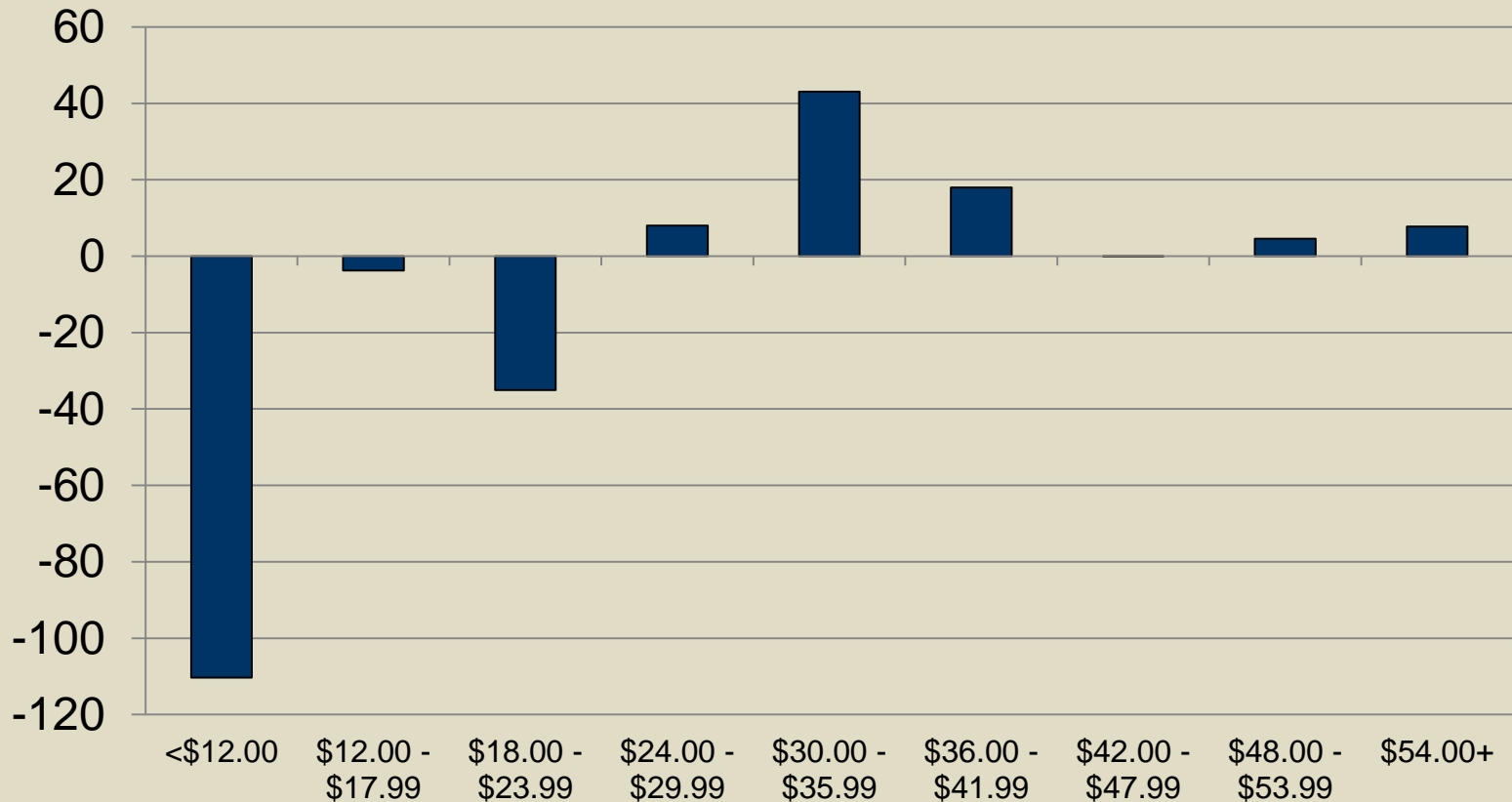
Washington State
Employment Security Department

Labor Market and Economic Analysis



Skamania: loss of lower-wage jobs

Change in jobs by hourly wage, 2007 - 2016



Source: Washington Employment Security Department

Washington State
Employment Security Department

Labor Market and Economic Analysis



Final notes

MCEDD distributes a Gorge labor market overview each month

A Gorge wage survey, with wages for over 280 occupations, is now available for 2016

Scott Bailey

scott.bailey@esd.wa.gov

(360) 735-4995